

Proposal for art installation

:By:

Paul Spooner

6418 Berkshire Drive, Everett, WA 98203

MrPaulSpooner@gmail.com

805-910-5814

:For:

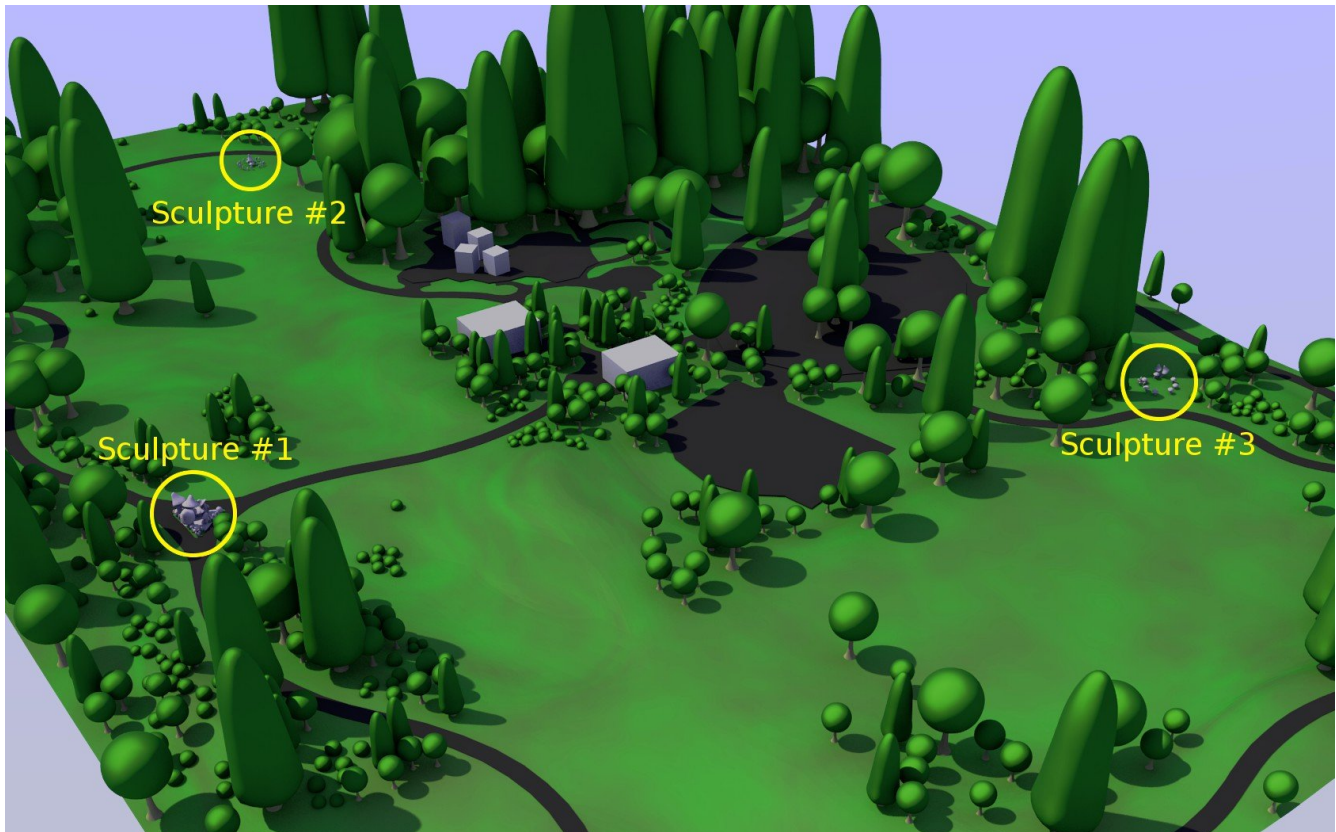
Miner's Corner County Park

Corner of 228th St SE and 45th Ave SE, North Creek, Snohomish, WA 98021

Overview

A total of three (3) concrete sculptures with a mushroom and nature theme.

1. Visual and tactile. Surpassing ADA accessibility standards.
2. Visual only with detail features.
3. Visual only with detail features.



Features

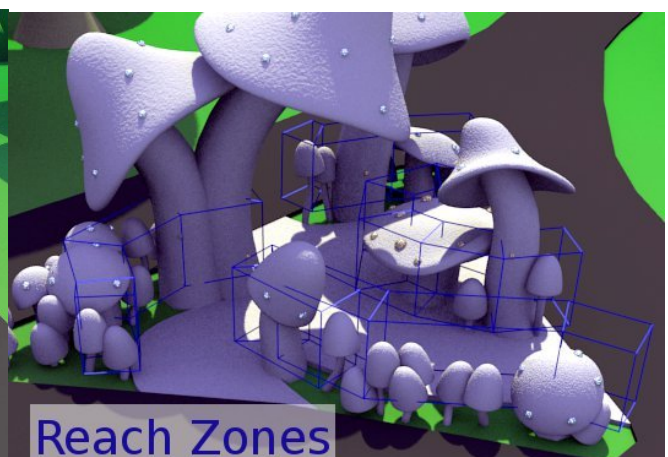
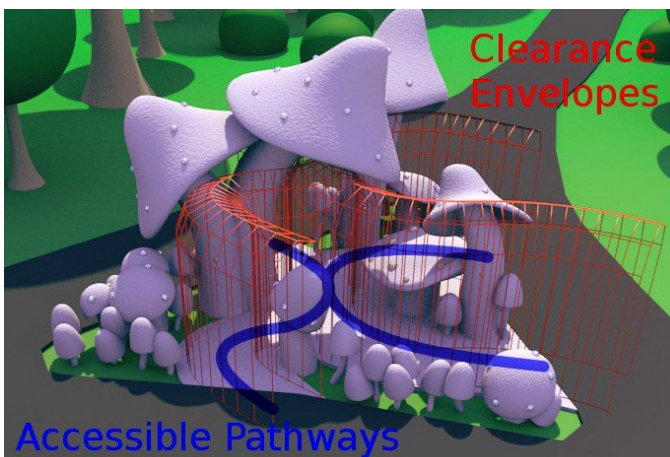
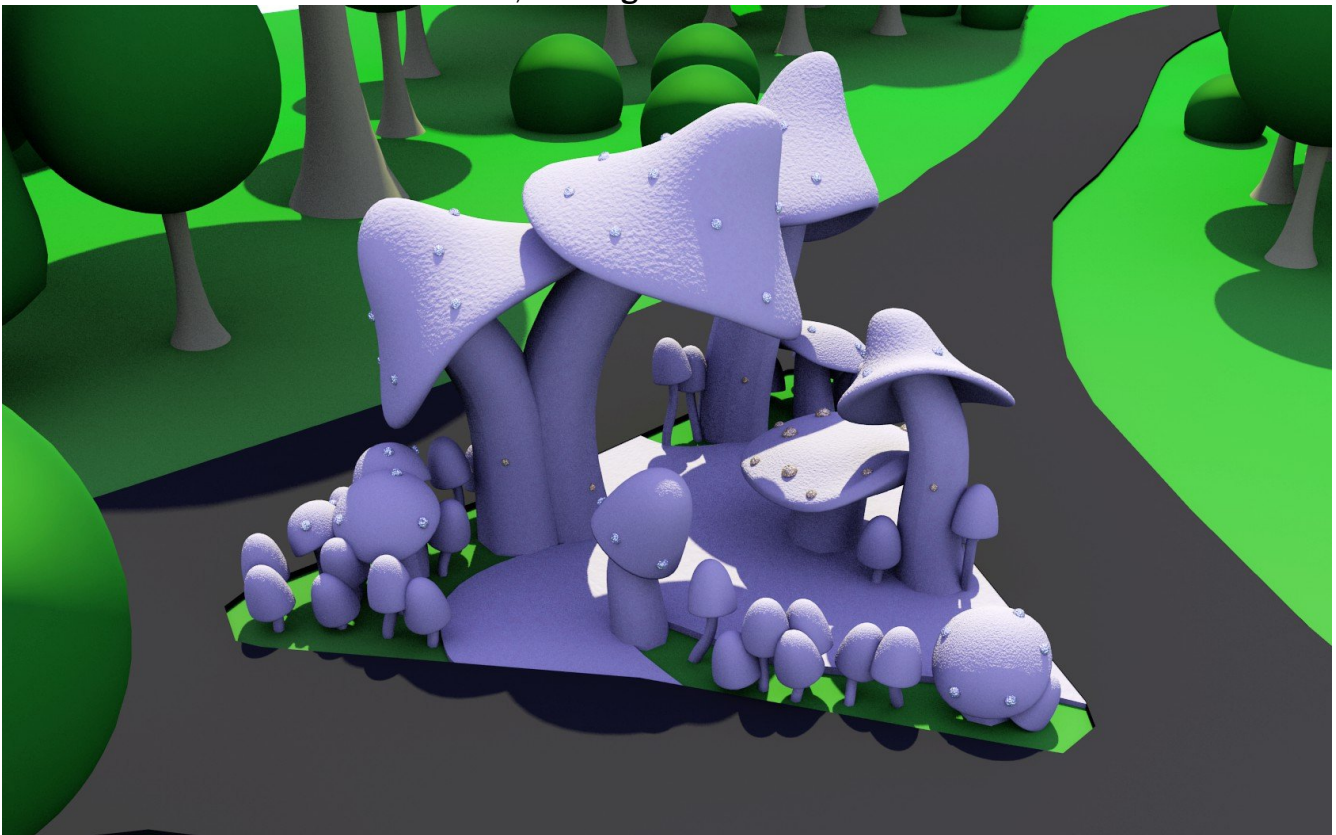
All Sculptures

- All sculptures are made of durable ferro-cement.
- All sculptures accented with metal detail features.

Sculpture 1

A cluster of mushrooms a total of 14 feet high and 26 by 22 feet wide with metal details and tactile focal features.

- Sixteen (16) unique tactile features in ADA accessible range.
- Four accessible entrances with accessible pathways throughout.
- One central “table” mushroom, with leg clearance





Tactile Features



Each tactile feature can be unique. Proposed subjects include:

- Miniaturized map of the park
- Stylized representation of animals that eat mushrooms (beetles, squirrels, ants, etc)
- Abstract topologies (regular solids, crystalline solids, circle Limit Tessellations, etc)
- Self-similar fractal clusters (recursive sculpture)

Tactile features can be made to treat any of the above, or any other topic. The artist welcomes suggestions for subject matter from concerned parties.

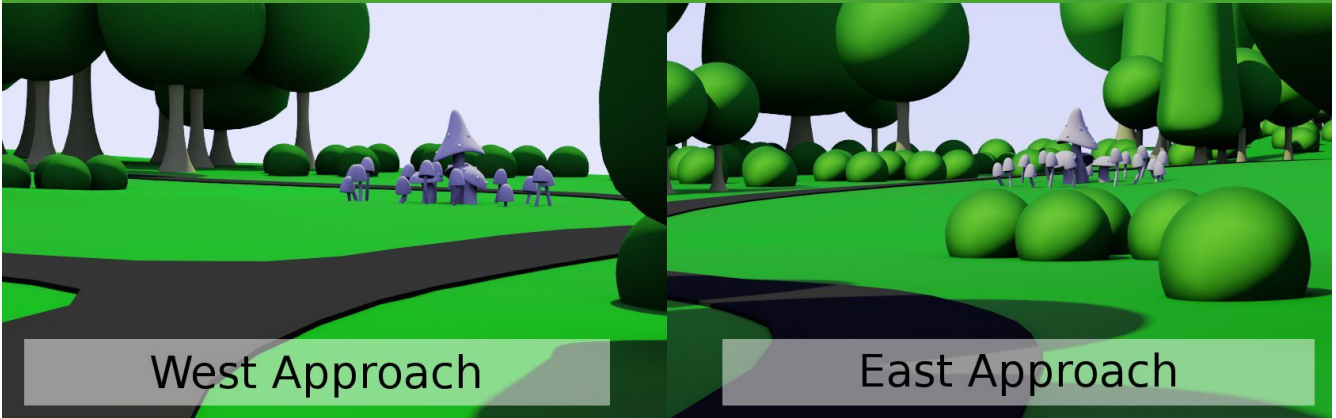
Tactile features will be secured to the steel



armature before applying the concrete. A removable design is possible on request, but would enable theft.

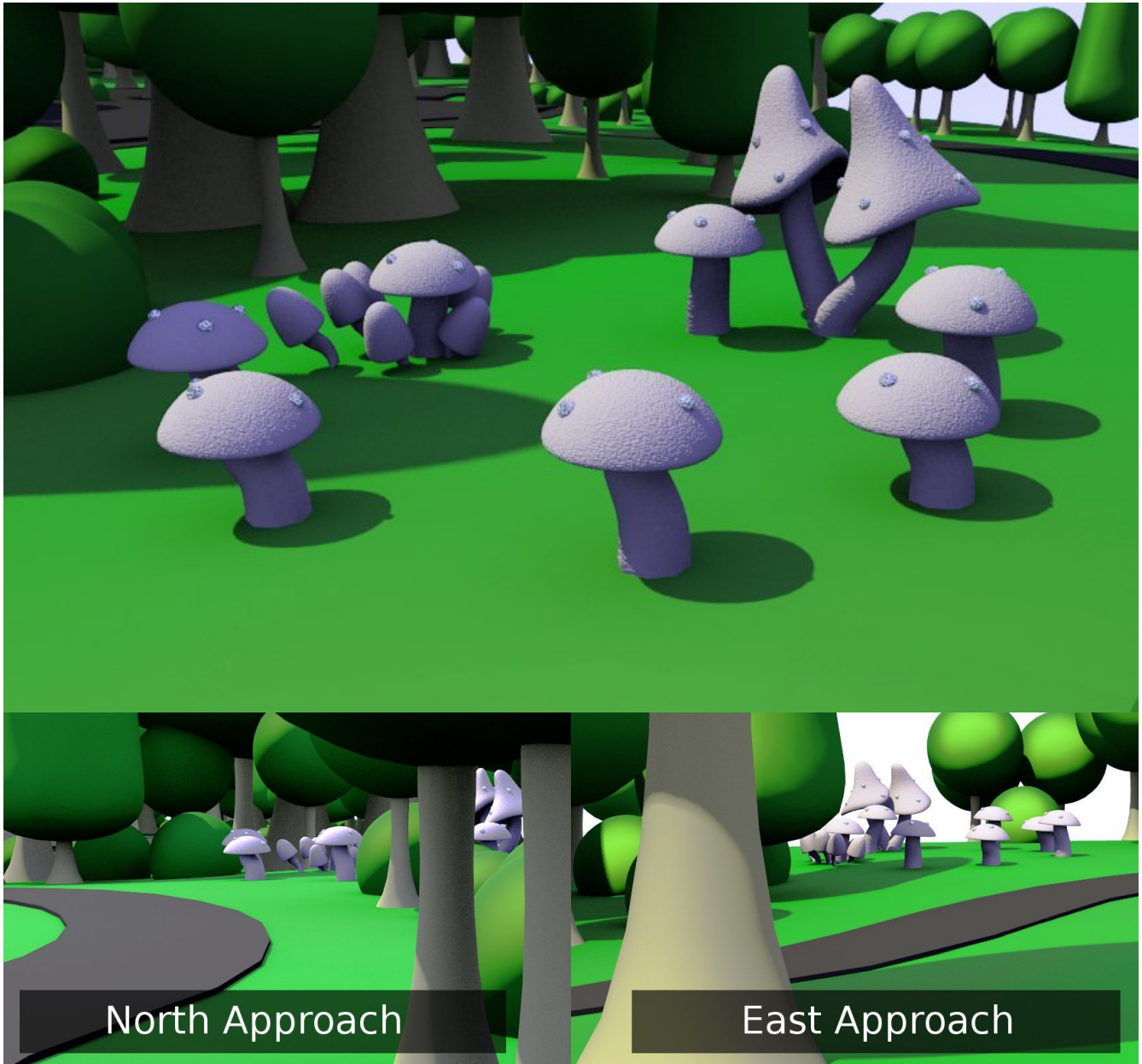
Sculpture 2

A circle of mushrooms a total of 9 feet high and 19 by 19 feet wide with metal details.



Sculpture 3

An empty circle of mushrooms a total of 8 feet high and 23 by 20 feet wide with metal details.



Technical Details

Construction

- Construction is of hand-formed steel reinforced concrete (ferro-cement)
 - Concrete is weather proof, vandal resistant, and time proven.
 - All steel armatures are welded at major members
- Detail features are 304 Stainless Steel

- Tactile features (Sculpture 1 only) are custom 3D printed sintered Stainless Steel and Bronze composite (approx 70% Stainless Steel and 30% Bronze).

Sculpture 1 ADA Compliance

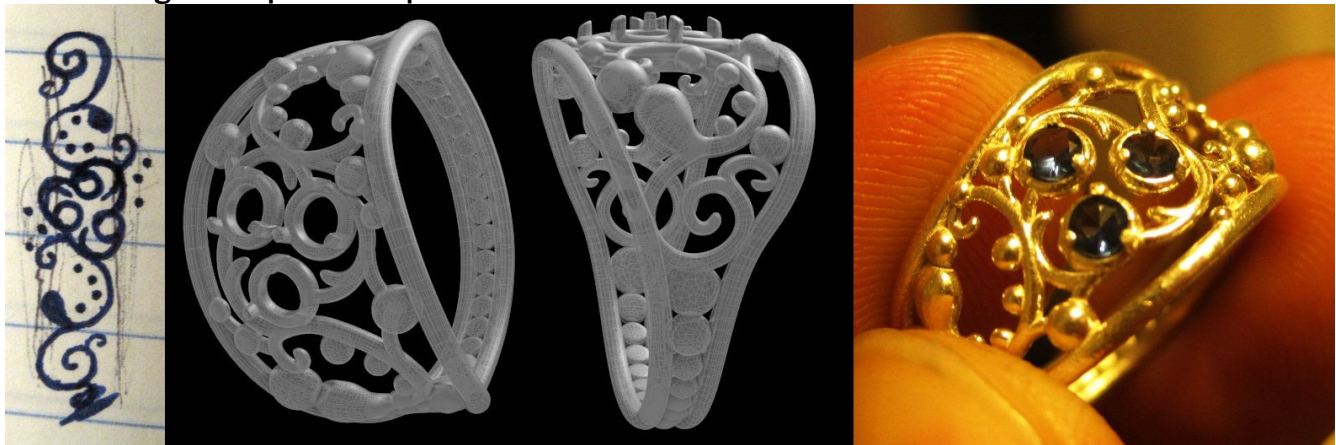
- Four accessible entrances to a connected accessible pathway through the sculpture. All pathways exceed 36" wide (per ADA 4.3.3) and 80" high (per ADA 4.4.2).
- All path surfaces are mildly textured concrete (per ADA 4.5.1) and sloped (at or less than 1:50 per ADA 4.3.7) to provide good drainage (per ADA 4.8.8).
- Two "T-Shaped" spaces are provided in the sculpture for turning wheelchairs (per ADA 4.2.3 and Figure 3(b) "Wheelchair Turning Space T-Shaped Space for 180 Degree Turns") and passing which far exceeds requirements (per ADA 4.3.4).
- The edges of the central mushroom are designed at table height with a minimum 27" vertical clearance under surface (per ADA 4.32.3) with the upper surface no higher than 34" from the ground (per ADA 4.32.4) for access to tactile detail features.
- All tactile features are located less than 50" and no more than 12" from the ground (exceeding ADA 4.2.6)
- All tactile features protrude less than 3" into walkways (surpassing ADA 4.4.1 which specifies 4" max)
- All obstructions to tactile features are less than 24" deep and 34" tall and tactile features behind such obstructions are less than 46" from the ground (per ADA 4.2.6 and figure 6(c) "Maximum Side Reach over Obstruction").
- Tactile features on the central mushroom are no more than 25" from the edge (per ADA 4.2.5 and Figure 5b "maximum Forward Reach over an Obstruction").

Artist Qualifications

Paul Spooner has been making art both digital and concrete art for over fifteen years. Please visit his website for more examples of his work: <http://www.peripheralartbor.com>

3D modeling to printed metal

Custom ring: concept to final piece

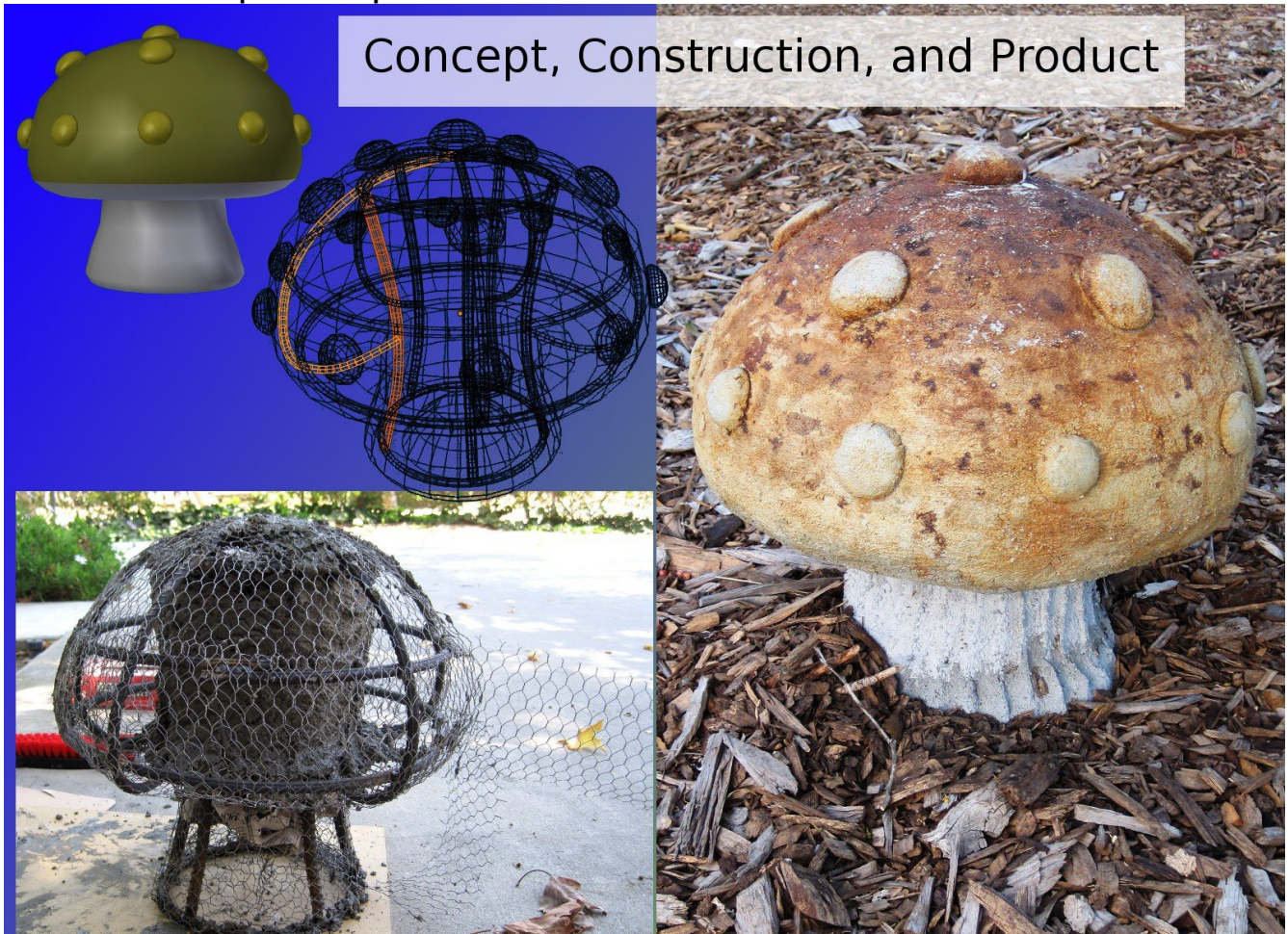


Custom Ring: concept to final piece



3D Modeling to Ferrocement

Mushroom: concept to final piece



Custom bridge: concept to final piece



Thank You

- For the opportunity to submit my concept for the art focal elements for Miner's Corner County Park.
- For reading this proposal.
- For choosing the very best art for our park.
- For your time.